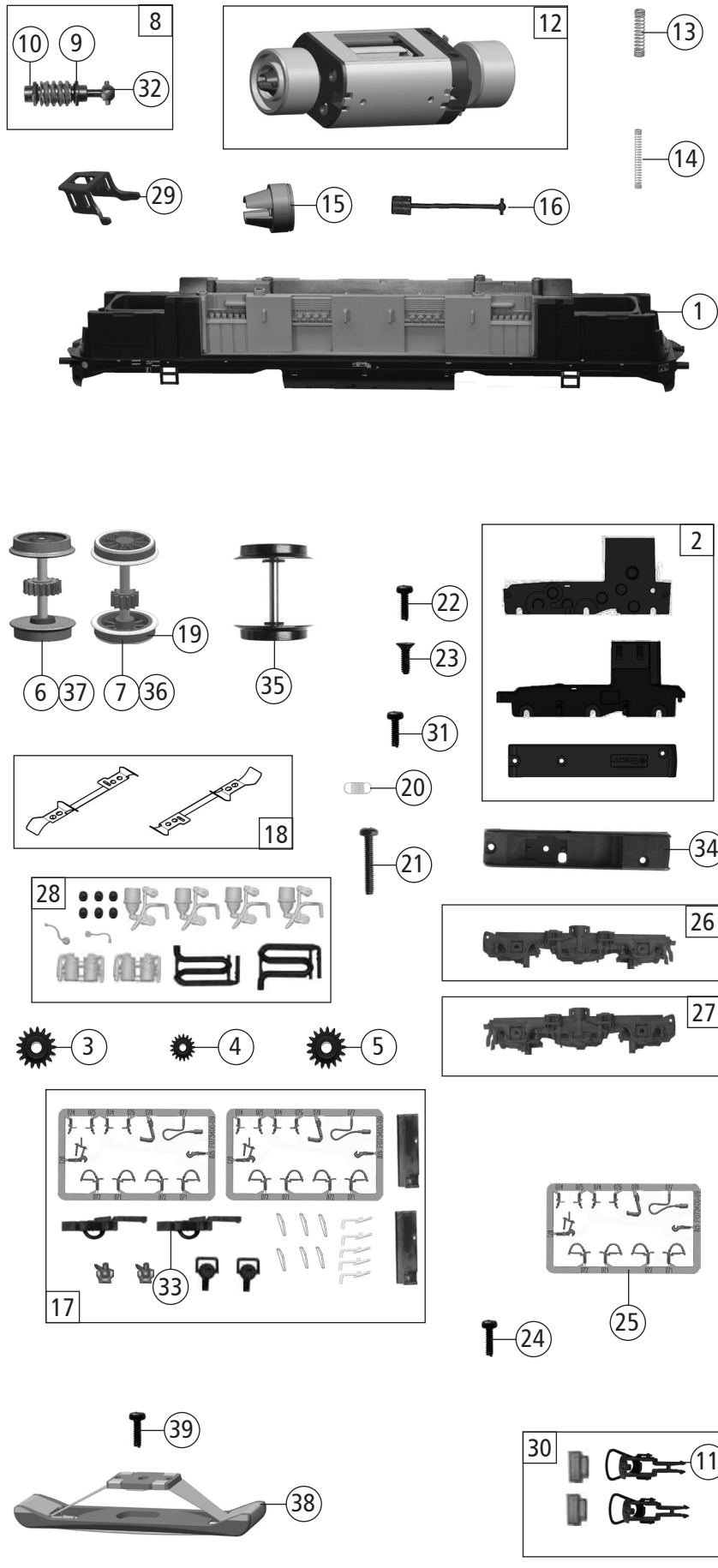


| Pos. Nr. Pos.no. | Beschreibung Description | Art.-Nr. Art.no. | Preisgruppe Price bracket |
|---------------------|--|---------------------|------------------------------|
| 7300060 | DR BR 118 ²⁻⁴ | | |
| 7310060 | | | |
| 7320060 | | | |
| 1 | Gehäuse kpl. 118 210-4 Body ass. 118 210-4 | 152292 | 38 |
| 2 | TS - Fenster Part set windows | 151151 | 12 |
| 3 | Linse Lenses | 142463 | 5 |
| 4 | TS - Scheinwerfer+Lichtleiter Part set - headlight+light conductor | 142464 | 11 |
| 5 | TS - Deichsel Part set - rod | 142465 | 9 |
| 6 | TS - Sandfallrohre Part set - Sandpipes | 145669 | 6 |
| 7 | TS - Griffe Part set - hand-rail | 142467 | 8 |
| 8 | TS - Steuerkabel/Leitung Part set - steering cable/wiring | 142468 | 11 |
| 9 | Stingriffe oben Roof hand-rail | 152294 | 6 |
| 10 | GF-Schraube M2x5 mm GF-Screw | 114966 | 3 |
| 11 | TS - Führerstand/Lichtabd. Part set - drivers cab/light cover | 142484 | 11 |
| 12 | Brückenstecker - Plux16 Connector - Plux16 | 133241 | 10 |
| 13 | TS - Gehäuse Part set - Body | 152293 | 16 |
| 14 | GF - Schraube M1, 6x5 mm GF - Screw | 115269 | 3 |
| 15 | Puffergriff li. + re. Buffer grip left + right | 142474 | 8 |
| 16 | Puffer rund gewölbt Buffer curve round | 88503 | 5 |
| 17 | Lokführer Loco driver | 110407 | 6 |
| 18 | Maschinenraumfenster Engine room window | 151150 | 11 |
| 19 | Türgriffstange Door hand-rail | 142489 | 3 |
| 20 | Kessel Boiler | 145658 | 5 |
| 21 | Tafelsatz Set of panels | 152295 | 12 |
| 22 | Platine kpl. m. LED-Platinen Printed circuit ass. w. LED printedcicut | 142482 | 25 |
| 23 | Lichtplatine Light PCB | 142483 | 10 |
| Sound | | | |
| 24 | Platine kpl. m. LED-Platinen Printed circuit ass. w. LED printedcicut | 142495 | 26 |
| 25 | Sound-Steckdecoder Sound decoder | 147377 | 39 |
| 26 | Lautsprecher Loud speaker | 129524 | 13 |

Änderungen in Konstruktion und Ausführung vorbehalten
We reserve the right to change the construction and specification



| | | | | |
|---------------|----|-----------------------|---|---|
| 730060 | DR | BR 118 ²⁻⁴ | = | |
| 731060 | | | = | 🔊 |
| 732060 | | | ~ | 🔊 |

| Pos. Nr. Pos.no. | Beschreibung Description | Art.-Nr. Art.no. | Preisgruppe Price bracket |
|------------------------|--|---------------------|------------------------------|
| 1 | Grundrahmen Main frame | 152291 | 26 |
| 2 | Getriebebesatz 3tlg. Gear bottom 3 parts set | 142471 | 13 |
| 3 | Schneckenzahnrad Worm gear | 86490 | 5 |
| 4 | Zahnrad Z=12 Gear wheel Z=12 | 142478 | 4 |
| 5 | Zahnrad Z=16 Gear wheel Z=16 | 117617 | 3 |
| 6 | Radsatz m. Zahnrad o. Haftring Wheelset w.gear wheel w/o. tract. tyres | 145671 | 11 |
| 7 | Radsatz mit Zahnrad mit 2 Haftringen Wheelset w. gear wheel w.2 tract.tyres | 145672 | 12 |
| 8 | Schneckensatz mit Kardankugel Set of worm gear incl.cardan ball | 142481 | 10 |
| 9 | Beilagscheibe Washer | 86108 | 3 |
| 10 | Lager für Schneckenachse Bearing for worm gear axle | 89749 | 6 |
| 11 | Standardkupplung Standard coupling | 89246 | 6 |
| 12 | Motor Motor | 136206 | 28 |
| 13 | Kontaktfeder D=2,4x11,6 mm Contact spring D=2,4x11,6 mm | 116876 | 3 |
| 14 | Motorkontaktfeder Motor contact spring | 136207 | 6 |
| 15 | Kardanschale Cardan reception | 87129 | 4 |
| 16 | Kardanwelle lang Cardan shaft long | 87172 | 4 |
| 17 | Zurüstbeutel Bag of accessories | 145675 | 13 |
| 18 | Radkontakte l+r Wheel contact l+r | 142492 | 11 |
| 19 | Haftringsatz 10Stk. 10,3-12,8mm Set with traction tyres 10 pieces | 40069 | --- |
| 20 | Zugfeder - 2,5x5,8x0,15mm Spring - 2,5x5,8x0,15mm | 86208 | 3 |
| 21 | GF-Schraube M1, 6x6 mmx5 mm Self-tapping screw | 114836 | 3 |
| 22 | GF-Schraube M1,6x4 mm Self-tapping screw M1,6x4 mm | 114850 | 3 |
| 23 | SK-Schraube M1,6x4 mm SK-Screw M1,6x4 mm | 115161 | 3 |
| 24 | BL - Schraube M2,2x13mm Tapping screw M2,2x13mm | 96532 | 4 |
| 25 | TS - Bremsschläuche + Zughaken Part set - brake tubes + coupling hooks | 139832 | 7 |
| 26 | Blende 1 kpl. Blind 1 complete | 145667 | 18 |
| 27 | Blende 2 kpl. Blind 2 complete | 145668 | 18 |
| 28 | TS - Blende Part set - blinds | 145670 | 10 |
| 29 | Schneckendeckel Worm gear cover | 137595 | 6 |
| 30 | Zurüstbeutel - Kupplungen Bag of accessories - couplings | 144854 | 8 |
| 31 | GF-Schraube M1,6x5 mm Self-tapping screw | 115269 | 3 |
| 32 | Kardankugel Cardan ball | 109614 | 4 |
| 33 | Kurzkupplung Short coupling | 115550 | 6 |
| AC-Wechselstrom | | | |
| 34 | Getriebeboden AC Gear bottom AC | 142496 | 6 |
| 35 | Radsatz o. Haftr. o. Zahnr. AC Wheelset w/o traction tyre w/o gear wheel AC | 142506 | 10 |
| 36 | Radsatz m. Haftringen m.Zahnrad AC Wheelset w. traction tyres w.gear wheel AC | 142507 | 12 |
| 37 | Radsatz m. Zahnr. o. Haftr. AC Wheelset w.gear wheel w/o traction tyre AC | 142508 | 11 |
| 38 | Schleifer 46mm o. Halteklammer Center pick-up 46 mm | 86031 | 14 |
| 39 | GF - Schraube M1, 6x5 mm GF - Screw | 115269 | 3 |

Ersatzteile erhalten Sie direkt unter www.roco.cc, bei Ihrem Fachhändler oder Ihrer Landesvertretung.
Spare parts can be ordered directly at www.roco.cc and from your local dealer or country representative.